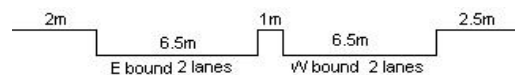


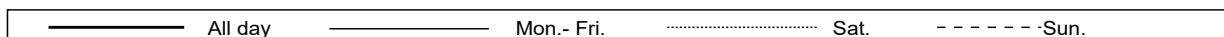
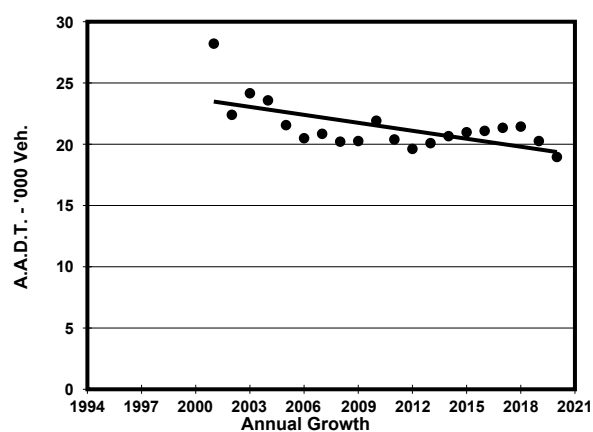
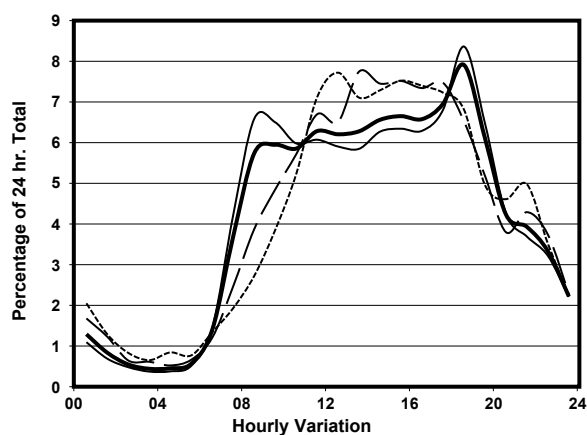
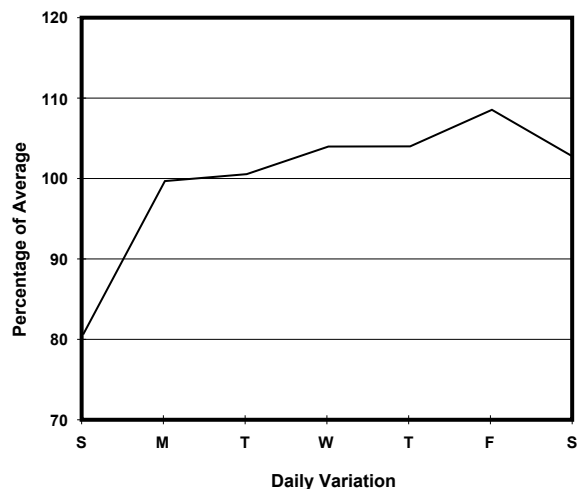
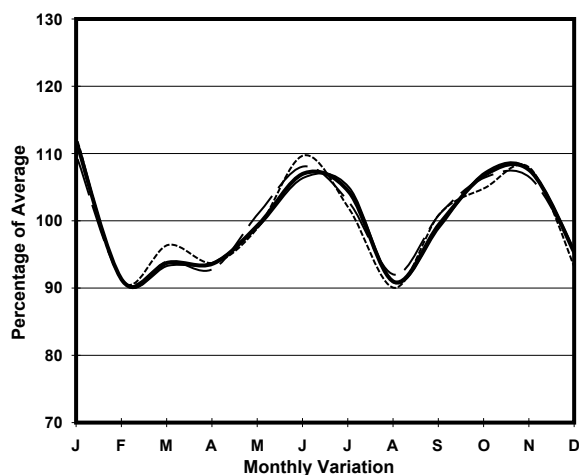
YEAR 2020

LINK CORNWALL ST (from WATERLOO RD to NAM CHEONG ST)

COVERAGE (B) STATION 4206  
ROAD NETWORK MAJOR  
ROAD TYPE DISTRICT DISTRIBUTOR



### 1. TRAFFIC FLOW VARIATION AND GROWTH



### 2. TRAFFIC CHARACTERISTICS (BY DIRECTION)

Parameter	All - Day	Mon. - Fri.	Sat.	Sun.
<b>EAST BOUND</b>				
A.A.D.T.	9480	9910	9740	7710
R 12 / 24 - %	75.7	76.4	74.8	72.9
R 16 / 24 - %	91.8	92.4	90.4	89.3
AM Peak Hour	0900-1000	0800-0900	0900-1000	0900-1000
One-way flow at AM peak hour	620	720	560	320
T - % (AM)	-	9.7	-	-
PM Peak Hour	1800-1900	1800-1900	1600-1700	1700-1800
One-way flow at PM peak hour	760	830	670	570
T - % (PM)	-	6.3	-	-
Prop.of commercial vehicles - 16 hr.	-	6.9	-	-
<b>WEST BOUND</b>				
A.A.D.T.	9480	9880	9940	7780
R 12 / 24 - %	73.6	74	73.6	71
R 16 / 24 - %	92.8	93.2	92	90.6
AM Peak Hour	0900-1000	0900-1000	0900-1000	0900-1000
One-way flow at AM peak hour	510	580	400	280
T - % (AM)	-	7	-	-
PM Peak Hour	1800-1900	1800-1900	1700-1800	1600-1700
One-way flow at PM peak hour	740	820	840	620
T - % (PM)	-	3.3	-	-
Prop.of commercial vehicles - 16 hr.	-	7.3	-	-

### 3. OTHER INFORMATION AND COMMENT

**4. Vehicle classification and occupancy - Monday to Friday**

Time		Class of vehicle									
		Motor Cycle	Private Car	Taxi	Private LB	PLB	Goods veh.		Non Fr. Bus	Fr. Bus	
							Light	M & H		SD	DD
0700-0800	Pro	4.8	31.9	20.8	1.6	0.0	16.8	1.6	16.8	0.2	5.6
	Ocp	1.2	1.4	1.8	1.0	0.0	1.4	1.5	18.0	7.0	36.0
0800-0900	Pro	2.4	56.7	17.3	1.2	0.0	12.1	3.6	4.0	0.0	2.7
	Ocp	1.0	1.2	1.8	3.3	0.0	1.6	1.6	15.0	0.0	38.6
0900-1000	Pro	2.4	60.3	11.0	1.6	0.0	17.6	2.7	2.4	0.0	2.1
	Ocp	1.0	1.3	1.7	1.5	0.0	1.6	1.3	2.7	0.0	31.9
1000-1100	Pro	0.8	54.2	12.0	0.8	0.0	24.5	3.2	2.0	0.0	2.5
	Ocp	1.0	1.3	1.7	1.0	0.0	1.6	1.8	7.0	0.0	19.4
1100-1200	Pro	4.5	54.1	14.0	1.4	0.0	20.3	0.0	3.6	0.0	2.1
	Ocp	1.0	1.4	1.8	1.0	0.0	1.7	0.0	3.4	0.0	21.1
1200-1300	Pro	3.0	56.8	15.3	0.0	0.0	17.8	2.5	2.1	0.0	2.4
	Ocp	1.0	1.6	1.4	0.0	0.0	1.6	1.8	7.0	0.0	25.0
1300-1400	Pro	2.8	52.5	13.9	1.2	0.0	21.9	2.8	2.4	0.0	2.5
	Ocp	1.0	1.5	1.7	2.0	0.0	1.6	1.1	4.2	0.0	28.2
1400-1500	Pro	1.8	52.2	14.7	0.4	0.0	25.0	1.8	2.6	0.0	1.6
	Ocp	1.0	1.6	1.9	1.0	0.0	1.6	1.6	7.9	0.0	31.8
1500-1600	Pro	2.5	55.3	17.3	2.1	0.0	15.2	3.0	2.1	0.0	2.4
	Ocp	1.0	1.4	1.6	2.8	0.0	1.7	1.3	7.8	0.0	27.3
1600-1700	Pro	1.9	58.7	16.2	0.4	0.0	17.4	1.2	2.3	0.0	1.9
	Ocp	1.0	1.5	1.7	5.0	0.0	1.7	1.0	3.8	0.0	40.2
1700-1800	Pro	4.7	64.6	13.3	0.8	0.0	9.4	2.3	2.7	0.0	2.2
	Ocp	1.1	1.4	1.7	2.5	0.0	1.9	1.3	5.0	0.0	48.2
1800-1900 Peak hour	Pro	3.8	73.7	10.5	0.3	0.0	6.7	0.3	2.9	0.0	1.8
	Ocp	1.0	1.4	1.8	5.0	0.0	1.4	1.0	17.7	0.0	51.6
1900-2000	Pro	4.4	72.4	14.4	0.0	0.0	4.1	0.3	2.5	0.0	2.0
	Ocp	1.1	1.4	1.7	0.0	0.0	1.8	1.0	10.3	0.0	37.4
2000-2100	Pro	2.2	61.9	20.8	0.0	0.0	8.8	1.1	2.2	0.0	3.0
	Ocp	1.0	1.3	1.8	0.0	0.0	1.6	1.0	6.0	0.0	22.8
2100-2200	Pro	4.5	63.9	18.5	0.0	0.0	7.8	1.1	1.1	0.0	3.1
	Ocp	1.1	1.6	1.6	0.0	0.0	1.6	1.0	2.0	0.0	21.5
2200-2300	Pro	1.3	66.7	23.9	0.0	0.0	3.8	0.0	0.6	0.0	3.8
	Ocp	1.0	1.7	1.8	0.0	0.0	1.5	0.0	3.0	0.0	17.9
16 hours	Pro	3.0	59.6	15.2	0.7	0.0	14.4	1.8	2.9	0.1	2.4
	Ocp	1.0	1.4	1.7	2.2	0.0	1.6	1.4	9.9	7.0	31.2

**Legend: Pro.** Proportion of vehicles in % (Sum may not add up to 100% due to figure rounding)\*

**Ocp.** Average occupancy of vehicles including both driver and passengers\*

**M&H** Medium and Heavy

\* All traffic data are collected from combined bounds